



Chatton Close, Chester Le Street, DH2 3HU
3 Bed - House - Mid Terrace
£151,950

ROBINSONS
SALES • LETTINGS • AUCTIONS • SURVEYS

Chatton Close

Chester Le Street, DH2 3HU

* NO CHAIN * WELL PRESENTED * DRIVEWAY AND PARKING FOR TWO CARS * NICE POSITION AND OUTLOOK *

Offered to the market with NO ONWARD CHAIN is this well-presented three-bedroom house, situated in a traditionally sought-after and highly popular development in Chester-le-Street.

The property features low-maintenance gardens to both the front and rear, along with a garage and additional parking space for two cars. The interior is thoughtfully arranged and well-maintained, offering an entrance porch, a comfortable lounge, and a spacious dining kitchen fitted with modern and attractive wall and base units. Upstairs, there are three bedrooms, comprising two doubles and one single, as well as a family bathroom.

Chatton Close in Chester-le-Street is a desirable area for potential buyers due to its excellent location. The property benefits from proximity to local amenities, schools, and transport links, making it ideal for families and commuters alike. Chester-le-Street offers a range of shopping, leisure, and dining options, as well as easy access to major roads such as the A1(M) for convenient travel to Durham, Newcastle, and beyond.

This property presents an excellent opportunity for those looking for a comfortable home in a prime location with the added convenience of no onward chain.













GROUND FLOOR

Entrance Porch

Lounge

13'5" x 6'10" (4.1 x 2.1)

Kitchen

14'9" x 10'9" (4.5 x 3.3)

FIRST FLOOR

Landing

Bedroom

13'5" x 8'10" (4.1 x 2.7)

Bedroom

10'9" x 6'10" (3.3 x 2.1)

Bedroom

7'10" x 7'6" (2.4 x 2.3)

Bathroom

5'10" x 5'10" (1.8 x 1.8)

Agent's Notes

Electricity Supply: Mains

Water Supply: Mains

Sewerage: Mains

Heating: Gas Central Heating

Broadband: Basic 13 Mbps, Superfast 80 Mbps, Ultrafast 1,139 Mbps

Mobile Signal/Coverage: Good/Average

Tenure: Freehold

Council Tax: Durham County Council, Band B - Approx. £1,891 p.a

Energy Rating: C

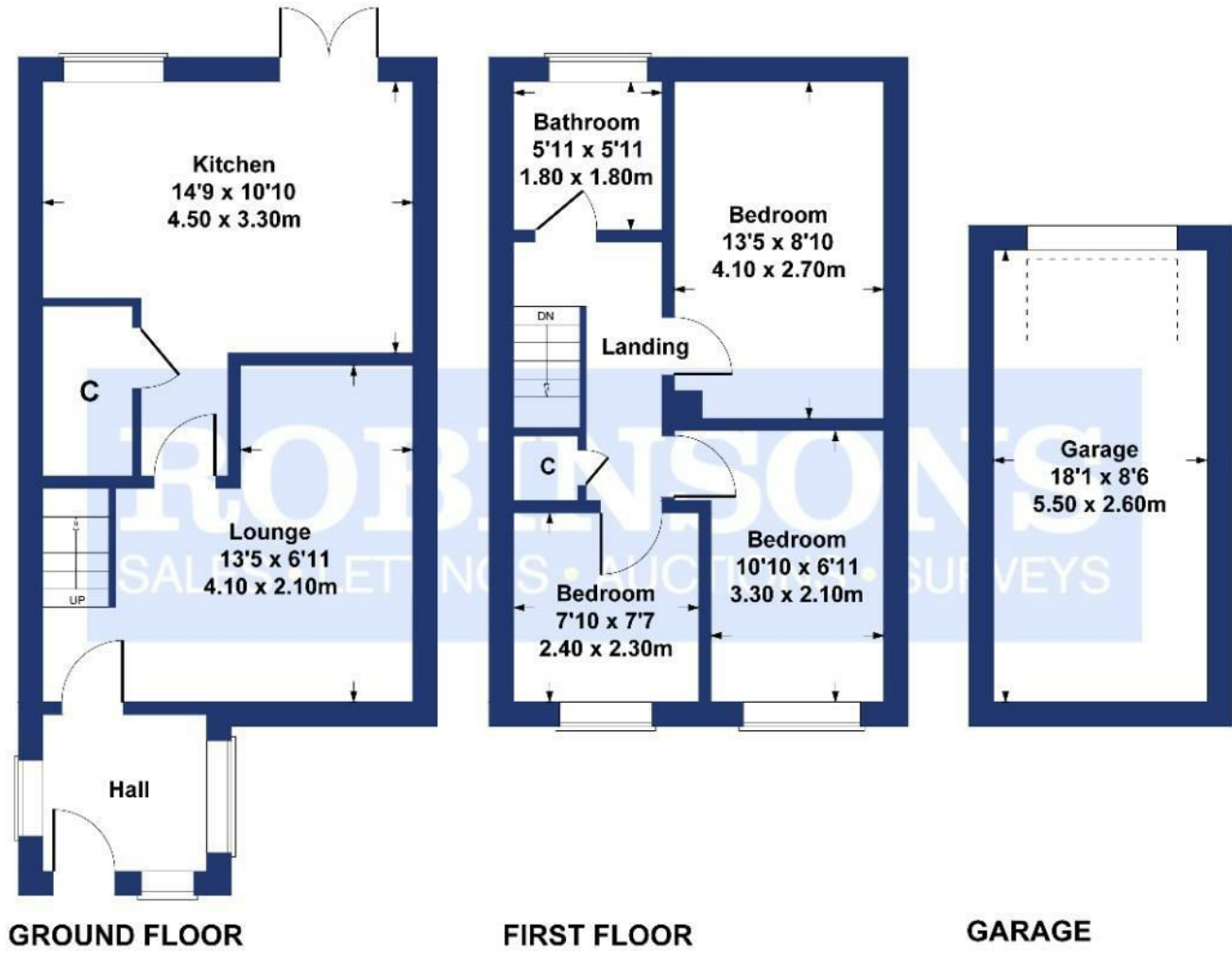


Disclaimer: The preceding details have been sourced from the seller and OnTheMarket.com. Verification and clarification of this information, along with any further details concerning Material Information parts A, B & C, should be sought from a legal representative or appropriate authorities. Robinsons cannot accept liability for any information provided.



Chatton Close

Approximate Gross Internal Area
926 sq ft - 86 sq m



SKETCH PLAN FOR ILLUSTRATIVE PURPOSES ONLY

All measurements walls, doors, windows, fittings and appliances, their sizes and locations, are approximate only. They cannot be regarded as being a representation by the seller, nor their agent.

Produced by Potterplans Ltd. 2024

Energy Efficiency Rating		Current	Potential
Very energy efficient - lower running costs			
(82 plus)	A		87
(81-81)	B		
(69-80)	C	72	
(55-68)	D		
(39-54)	E		
(21-38)	F		
(1-20)	G		
Not energy efficient - higher running costs			
England & Wales		EU Directive 2002/91/EC	

For clarification we wish to inform prospective purchasers that we have prepared these sales particulars as a general guide. We have not carried out a detailed survey, nor tested the services, appliances and specific fittings. Room sizes should not be relied upon for carpets and furnishings, if there are important matters which are likely to affect your decision to buy, please contact us before viewing the property. Robynsons can recommend financial services, surveying and conveyancing services to sellers and buyers. Robynsons staff may benefit from referral incentives relating to these services.

45 Front Street, Chester Le Street, DH3 3BH
Tel: 0191 387 3000
info@robinsonscls.co.uk
www.robinsonsestateagents.co.uk

